

SAMICK THK

WORLD CLASS CREATIVE VALUE CREATOR ON SPACE & MOTION



CONTENTS

SAMICK WAY

Way of SAMICK, only for SAMICK

CEO MESSAGE 03

COMPANY OVERVIEW 04

VISION 05

HISTORY 06

RESPONSIBILITY 07

BUSINESS AREA 08

World-Class Space & Motion

World's top space and motion

SPACE 09

MOTION 25

R&D 34

Global Leading SAMICK

SAMICK leading the world

WORKPLACE 36

GLOBAL NETWORK 42



CEO MESSAGE



SAMICK THK moves toward the new history of the 100-year company.

SAMICK THK has emerged as the smart factory solution company representing Korea, beyond 10-year business expansion involving the files & rasps in 1960's, rice bins in 1970's, and LM system in 1980's, and we attribute this honor to dedicated customers and local communities. Thus, we deeply feel grateful.

SAMICK THK wrote the history of growth and innovation for 60 years. We did our best to benefit all stakeholders, including producers, sellers and consumers. In addition, SAMICK THK today stands here thanks to the three spirits, consisting of ethical and transparent management(morality), customer satisfaction management that satisfies customers with the best technology and products(precision), and human respect management that provides warm affection(heart).

In order to become the valuable company leading the new era in a time of paradigm change, we feel deeply responsible and obliged to make efforts. Internally, we will build our binding force and focus to accomplish group centripetal force and continuous growth. We will constantly discover the new opportunity for innovative customer and consumer experiences, and we will realize our vision as the company creating world class values of space and motion. SAMICK THK will take another step ahead as the global smart factory solution company.

New era history, to be opened henceforth by SAMICK THK, will hold infinite progress and values. We will fulfill our social responsibilities and move forward creatively, not ever fearing change, via challenging growth and value creation. Through endless challenging spirit and fierce innovation that made SAMICK THK so far, we will not be idle but drive forward. We, SAMICK THK Co., Ltd. promise to do our best to build the new history towards the 100-year company.

- CEO Jin Young Hwan

COMPANY OVERVIEW



Total asset
474 billion KRW



Capital
105 billion KRW



Sales
316 billion KRW



Number of employees
705

> Based on the consolidated financial statement (2023.12)

Foundation	May 10 th , 1960
HQ location	163, Seongseodong-ro, Dalseo-gu, Daegu
CEO	Jin Young Hwan (陳榮煥), Jin Joo Wan (陳注完)
Major business	Smart factory business, Motion business
Company type	Listed company
Business locations	Seoul, Suwon, Incheon, Dongtan, Pyeongtaek, Cheonan, Daejeon, Daegu, Changwon, Ulsan, Busan
Affiliates	SAMICK KIRIU Co., Ltd., SAMICK Precision Ind. Co., Ltd., SAMICK HDS Co., Ltd., SAMICK SDT Co., Ltd., SAMICK ADM Co., Ltd.

Official webpage >



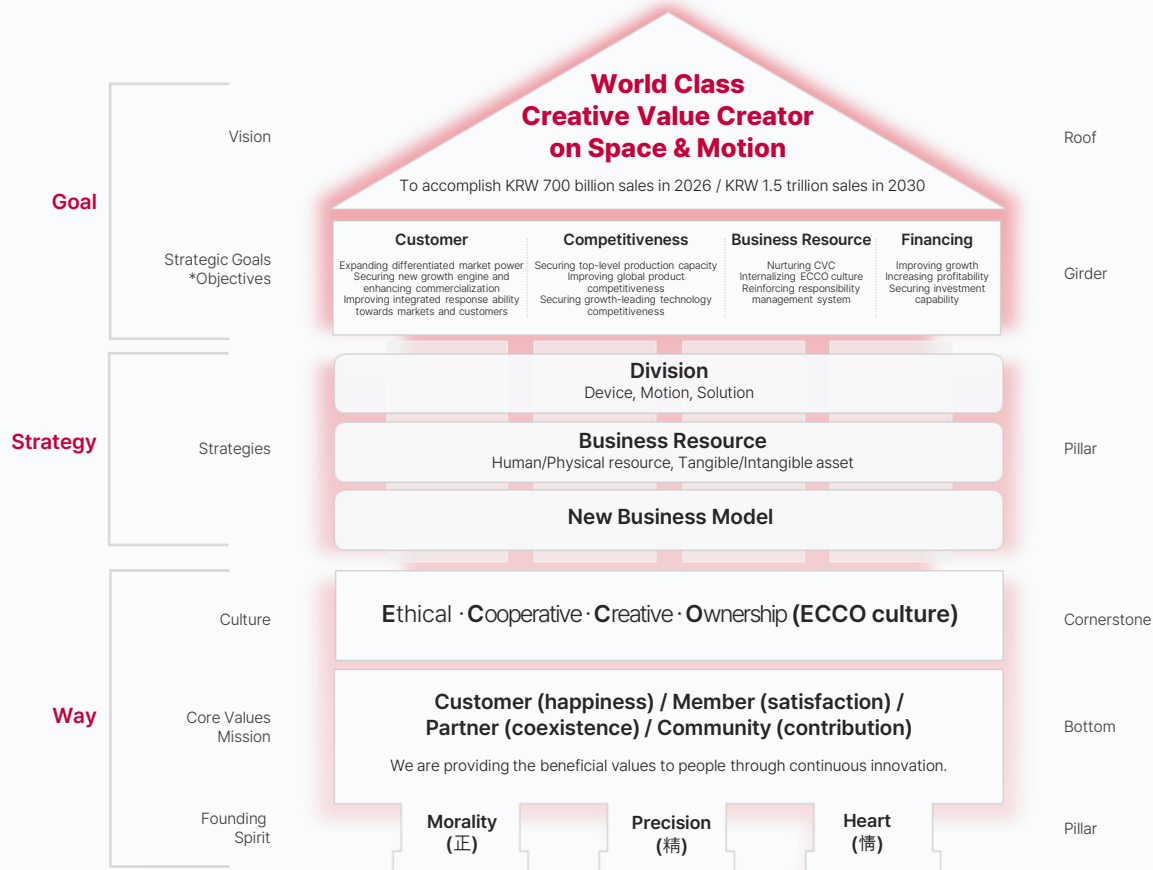
VISION

World Class Creative Value Creator on Space & Motion

SAMICK THK is the smart factory solution company that creates the world's top values on **space** and **motion**.

With DNA of innovation, not fearing environmental change and transforming ahead, SAMICK THK will confidently face the crisis and challenge, and build new values and history.

The Vision House of SAMICK THK



A Slogan of SAMICK THK

Heritage & New Era

Succeed our founding spirit and awaken DNA of innovation inside us.

Heritage

Power to pioneer the new era in the history of SAMICK, and the driving force behind creating the 100 year of SAMICK THK

&

Connection between Heritage and New Era, to reach the New Era through the founding spirit of Heritage

New Era

Infinite wisdom and power to pioneer the new era of SAMICK THK by flexibly responding to changes and crises with DNA of innovation based on Heritage

HISTORY

First step to the world with files and rasps!

1960. 05. 10

Founded SAMICK Industry
(Hand files and rasps production and sales)

1965. 05. 01

Founded SAMICK File & Rasp Co., Ltd.

1980. 08. 02

Acquired KS mark for the ironwork file (No. 2158)

1983. 08. 17

Changed the company name to SAMICK Industry Co., Ltd.

1987. 03. 28

Founded SAMICK Precision Ind. Co., Ltd.

1987. 08. 01

Founded the technology institute

1989. 09. 26

Stock listed at the Korea Exchange

Launched as the technology-intensive company with LM GUIDE!

1991. 05. 31

Concluded the cooperation and technology introduction contract with THK in Japan

1991. 11. 25

Built LM GUIDE factory and began production

1996. 11. 15

Acquired Quality management system (ISO 9001) certification

1999. 05. 01

Founded THK-SAMICK Slide Co., Ltd.
(Currently, SAMICK SDT Co., Ltd.)

2001. 05. 01

Changed the company name to SAMICK LMS Co., Ltd.

2003. 05. 23

LM GUIDE chosen as the next-generation world-class product

2003. 09. 15

Part and material R&D company selected by the Ministry of Commerce, Industry and Energy

Business diversification enhancing technology competitiveness!

2003. 11. 15

Founded SAMICK HDS Co., Ltd.

2004. 03. 24

Founded SAMICK scholarship committee (Daegu University)

2005. 10. 04

Founded SAMICK KIRIU Co., Ltd.

2006. 04. 20

Changed the company name to SAMICK THK Co., Ltd.

2008. 04. 11

Acquired certification of reliability for parts and materials (Ministry of Knowledge Economy)

2010. 03. 08

Certified Linear motor CE (TUV NORD in Germany)

2010. 12. 28

Seismic isolation table certified as New Excellent Technology (NET) (Ministry of Knowledge Economy)

2011. 03. 03

Initiated domestic production of ball screws

2011. 11. 25

Selected for Excellent quality innovation (hosted by Samsung Electronics)

2012. 06. 04

Environmental management system (ISO 14001) certified

Step ahead as the global solution partner company!

2014. 12. 17

Concluded the business agreement on articulated robot R&D (Samsung Electronics)

2014. 12. 19

Selected for Best Family Friendly Management (Ministry of Gender Equality and Family)

2016. 12. 13

Selected as the "Company with good spending" (Republic of Korea National Red Cross)

2019. 03

Received Gold Tower Order of Industrial Service Merit (Contribution to national industrial development through commerce and industry promotion)

2022. 10. 14

Launched SAMICK MATZ Ventures Co., Ltd.

2023.03.17

Signed a business agreement for grafting of AI/DX technology (KT)

2024. 02. 05

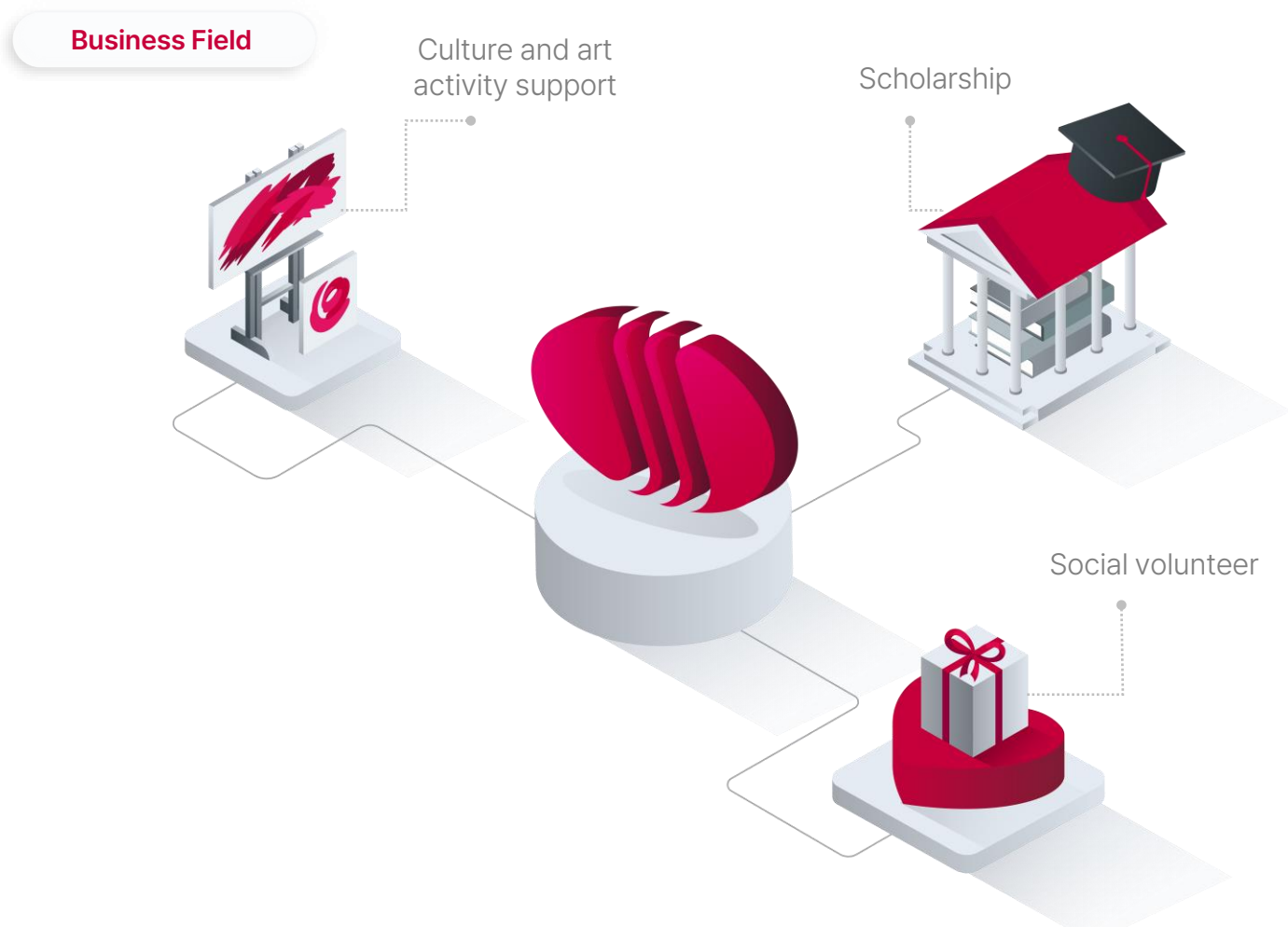
Transfer of daily assisting AI wearable robot technology (KIST)

2024. 04. 05

Signed an MOU for industry-academia cooperation in the field of promising technologies

RESPONSIBILITY

SAMICK THK will inherit the founding spirit of benefiting all producers, sellers and consumers and of supporting the nation, local community and people and fulfill the corporate social responsibility, thereby becoming **the company that provides continuous trust to customers and society.**



- **2000.07**
Selected for excellent new labor-management culture (Minister of Labor)
- **2006.03**
Selected for excellent ethical management (Daegu Bank)
- **2011.03**
Won the Korea Ethics Management Award (Transparent management)
- **2014.12.19**
Selected for Best Family Friendly Management (Ministry of Gender Equality and Family)
- **2016.12.13**
Selected as the "Company with good spending" (Republic of Korea National Red Cross)
- **2017.06**
Selected as the employment-friendly representative (Daegu Metropolitan City)
- **2018.02**
Selected as Influential CEO in Korea in 2018
- **2018.02**
Won the Korea Ethics Management Award (social volunteer sector)
- **2023.01**
Won the 12th Seo Sangdon Award
- **2023.11**
Won the Best Strategic Management Award (Manufacturing category)

SMART FACTORY SOLUTION

SAMICK THK creates the world's top-class value of **space.**

Space of SAMICK THK expanding the value of space infinitely beyond devices applied to various industries, to the solution pioneering the realization of the smart factory, including the cooperation robot and autonomous mobile robot. SAMICK's future lies in the device and solution, adding the value to technology.

BUSINESS AREA

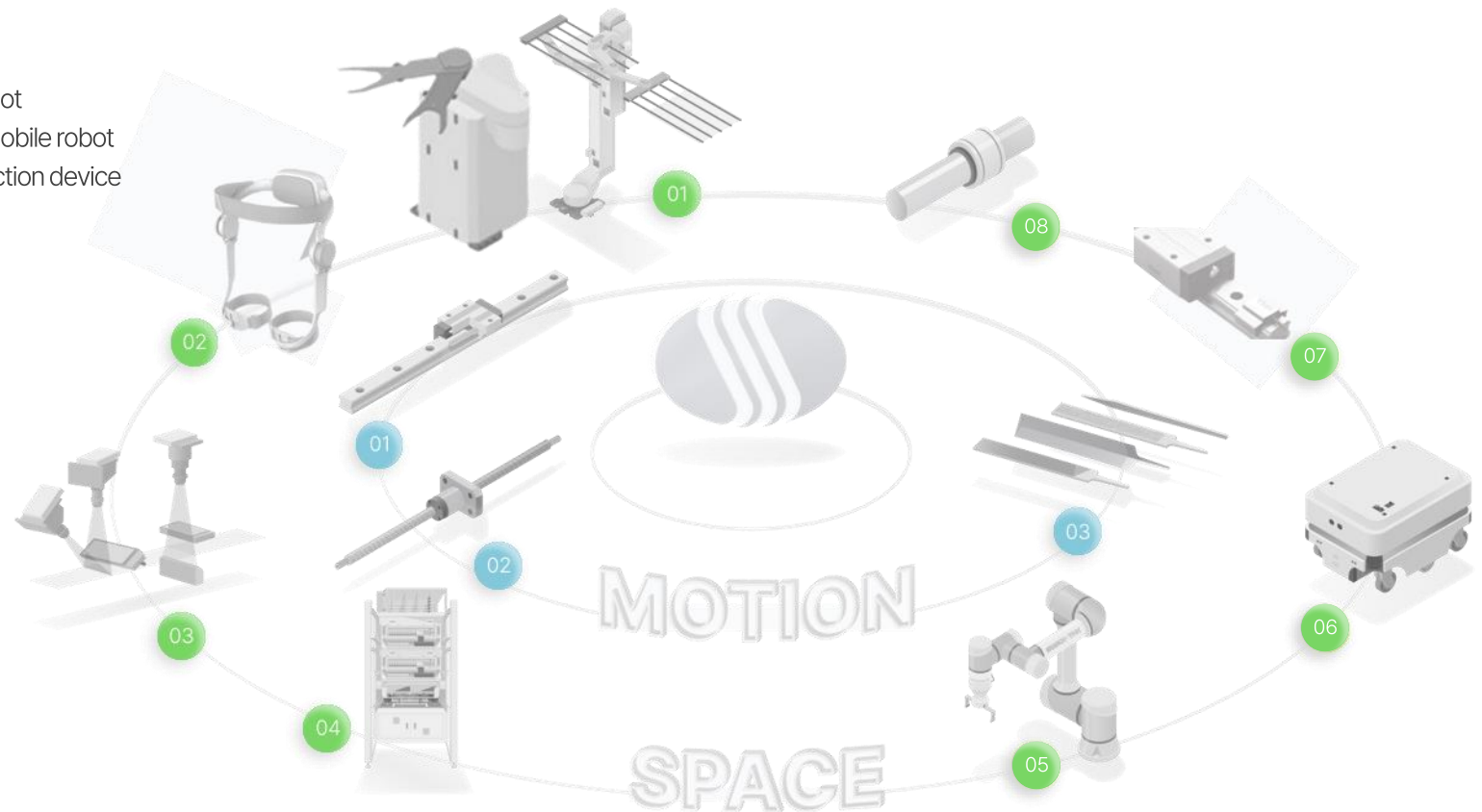
SAMICK THK is leading innovation in various business fields such as robots and systems as well as the motion fields with NO. 1 brand power. With this space expansion, SAMICK THK aims to evolve into the global smart factory company providing the solution required by all industries. SAMICK THK will not stay idle at the top, but develop and grow to add the value of technology to the new era.

● SPACE

- ① Logistics robot ITR / Wafer transfer robot
- ② Wearable robot
- ③ Smart factory system development
- ④ HP/CP equipment
- ⑤ UR cooperation robot
- ⑥ MiR autonomous mobile robot
- ⑦ IoT predictive detection device
- ⑧ Quick clamber

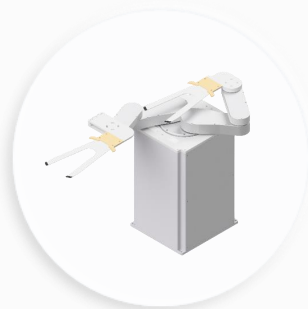
● MOTION

- ① LM guide
- ② Ball screw
- ③ File and rasp



Smart Factory Solution

Beyond simple parts, we manufacture and sell secondary battery processes, inspection equipment, and industrial robots in various fields, Working with the world's best partners, we explore a new business future with systems and robots that go beyond elemental parts and instrument devices.



Smart Factory Solution

Beyond simple parts, we manufacture and sell secondary battery processes, inspection equipment, and industrial robots in various fields, Working with the world's best partners, we explore a new business future with systems and robots that go beyond elemental parts and instrument devices.



01 Industrial Robots

1 Industrial Transfer Robot

..... Logistics robots that applied SAMICK's design, assembly technology and precision decelerator **have high reliability through sales experience for more than 15 years.**

Advantages



High stiffness frame structure



Stable control performance



High durability



CE certified controller



ITR-A6S

6G – 8.6G panel large glass substrate application



ITR-A4T

Cell, 500X500 glass substrate application



ITR-VS

20kg load ultra-high vacuum robot

* ITR : Industrial Transfer Robot

01 Industrial Robots

2 Wafer Transfer Robot & Module

We continue to maintain the super gap in robot technology with **the leading products that have realized various equipment application experiences and optimal design.**

Advantages



High precision and productivity



Compliance with the first-class cleanroom environment

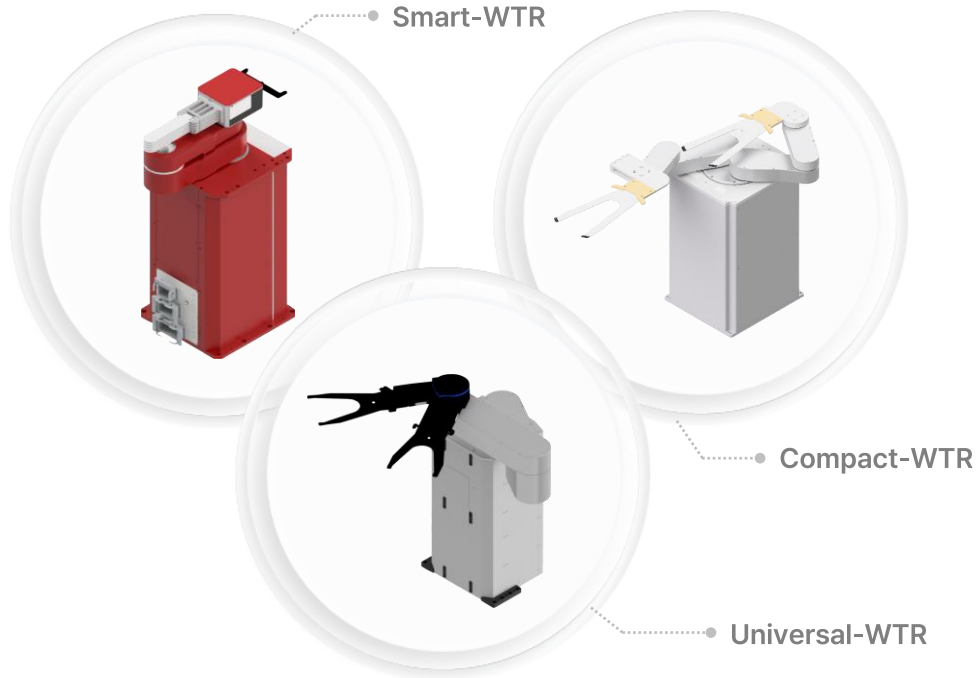


CE, UL certified controller



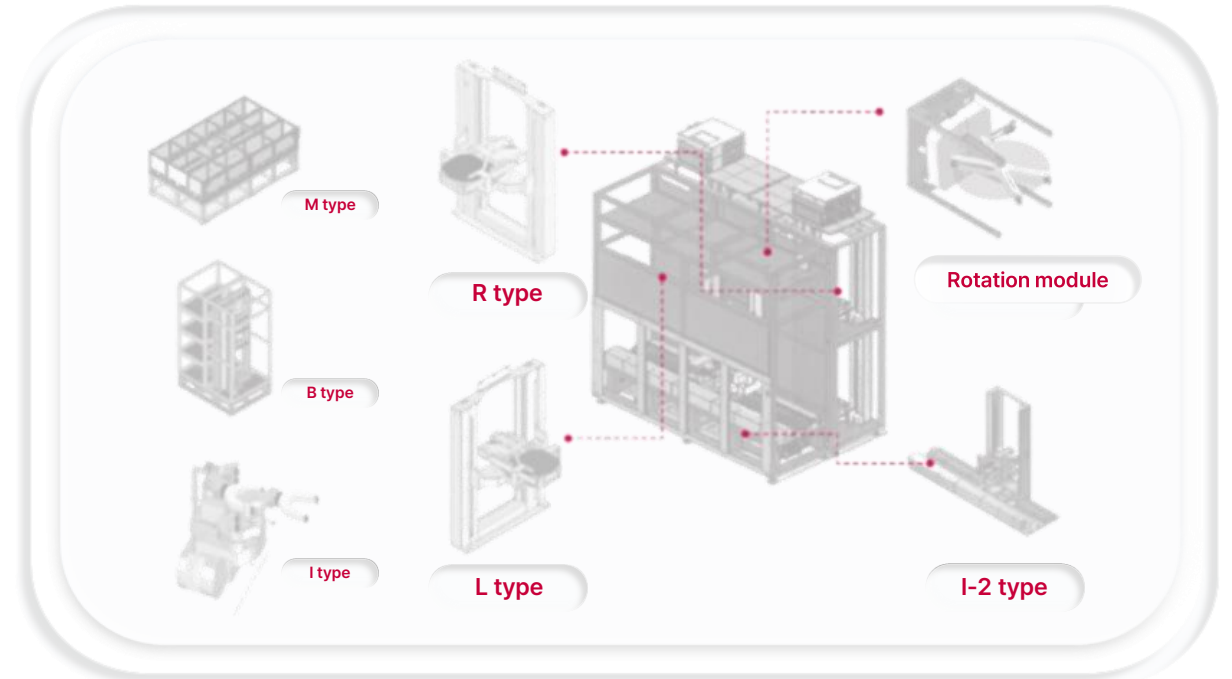
Participation and mass production of ODM projects including Samsung Electronics and SEMES

Major products



ODM

It contributes to the localization and globalization of semiconductor equipment through the customized optimal design, quality control and mass production.



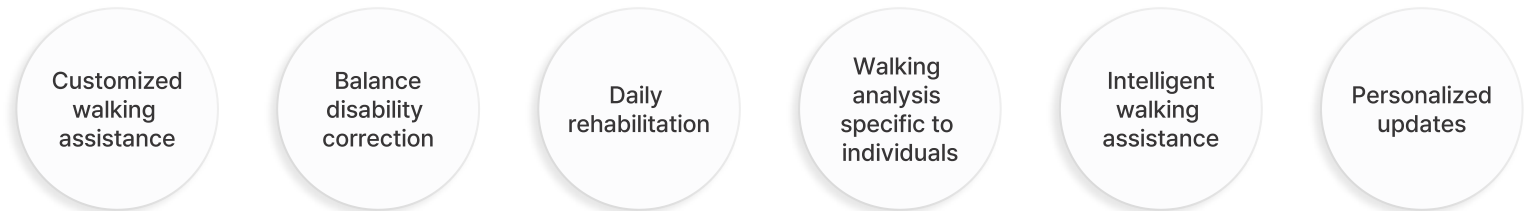
01 Industrial Robots

3 Wearable robot

A super-lightweight hip wearable robot capable of omnidirectional walking/balance assistance, which is a personalized walking assistance system, using technology converging AI healthcare and wearable robots.



Wearable robot image

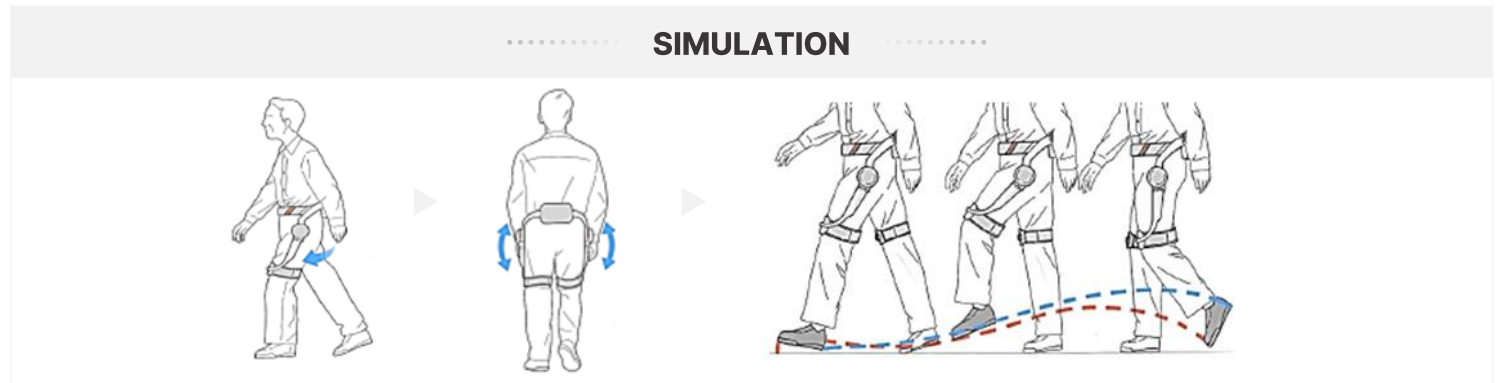


01 Daily regular walking health monitoring
Measures the wearer's walking motion and walking parameters via a robot sensor

02 AI algorithm analysis

03 Optimized muscular strength assistance plan

04 Customized muscular strength, balance, and walking stability assistance



01 Industrial Robots

4 World's top cooperation robot

UNIVERSAL ROBOTS is the cooperation robot that can work with humans, flexibly applied in various work environments.

Advantages



High productivity



Easily programmable



High security



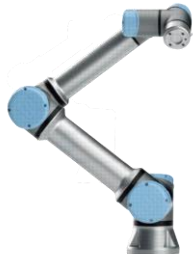
Quick installation

Major products



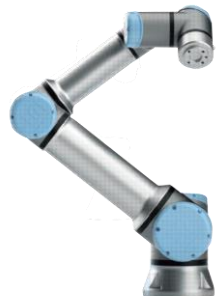
UR3e

High precision,
light assembly



UR5e

Lightweight,
quick setup



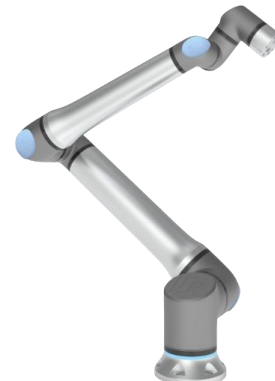
UR16e

CNC machine
tending



UR10e

Lightweight
packaging work



UR20e

Heavyweight work



UR30

Maximum payload of
collaborative robots

Manufacturer
Universal Robots (Denmark)

01 Industrial Robots

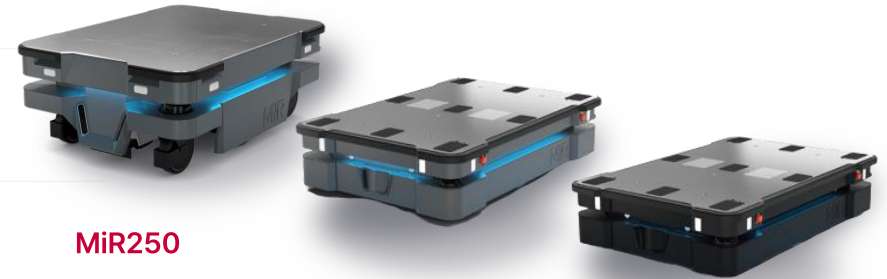
5 World's top autonomous mobile robot (AMR)

MiR (Mobile Industrial Robot) provides further improved productivity with fast mobility, high security, compatibility and expansion. AMR (autonomous mobile robot) has its core in "SMART autonomy."



- **MiR250** Faster, safer and more agile robot than any other solution Presenting the new standard for internal logistics
- **MiR600, MiR1350** Autonomous mobile robot optimized for logistics of large, high-load parts Prioritizing safety, cost and efficiency

Manufacturer: MiR (Denmark)



MiR250

MiR600

MiR1350



MiR Pallet Lift



MiR Shelf Carrier



MiR Hook

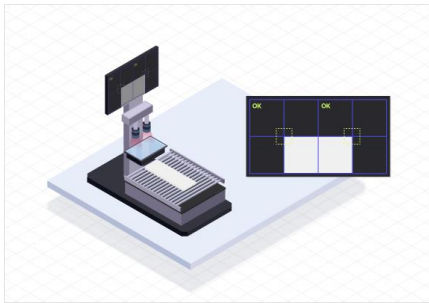
02 System

1 Vision system

Images and videos obtained by a high-performance camera are processed by vision software and converted to suit the purpose at hand. This pivotal technology enables users to judge and pinpoint the defects of products difficult to recognize with bare eyes to maintain quality control and enhance productivity, and is being utilized in various industries and manufacturing sites.

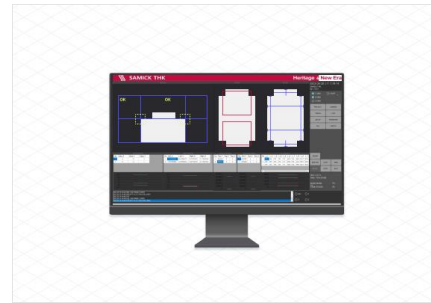
Video processing functions

Alignment



Aligns product location using a camera

Inspection



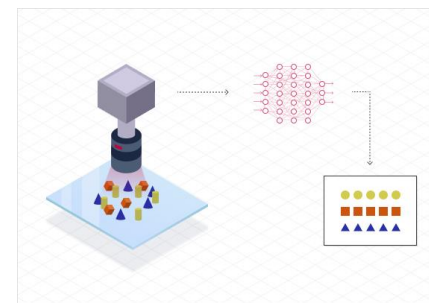
Automatically evaluates product quality (exterior defects, faults, etc.)

Cognition



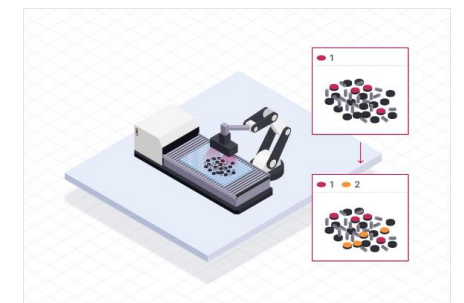
Processes and manages data from product identification tags through a reader and camera

Deep Learning



Accurately detects and classifies products by recognizing and analyzing obtained images

3D Inspection



Detects the location on a space and calculates moving paths using 3D video processing technology



Detailed view (QR)

02 System

2 History management system

SAMICK THK's history management system called ATLUS (Adaptive Tracing Logic Unit System) establishes and operates a system for managing and reporting data by utilizing identification technology geared to customer requirements through communication between facilities, as well as facilities and modules. It builds the optimum environment for actualizing the customer's smart factory by maximizing the integrity and quality of information through the systematic connection of facilities, processes, and manpower.

Core Value



Flexibility

Through data processing algorithm technology and arrangement and reporting of data algorithms & communication technology inside controllers, it can be applied to any process in any industry or form of facility line without limitations



Global coverage

Capable of responding to customers' requests such as CS, remodeling, improvement, overhaul by establishing and operating overseas branches in Europe, U.S., China, etc.



Convergence technology

It can respond flexibly to not only large-scale initial line setups but also project response by maintaining manpower, cooperative organizational structure, robust independent technical personnel, and suppliers' organization system.



Algorithm optimization

Designs and applies the optimal algorithm by taking into account the operating environment, data collection method, and manufacturing system

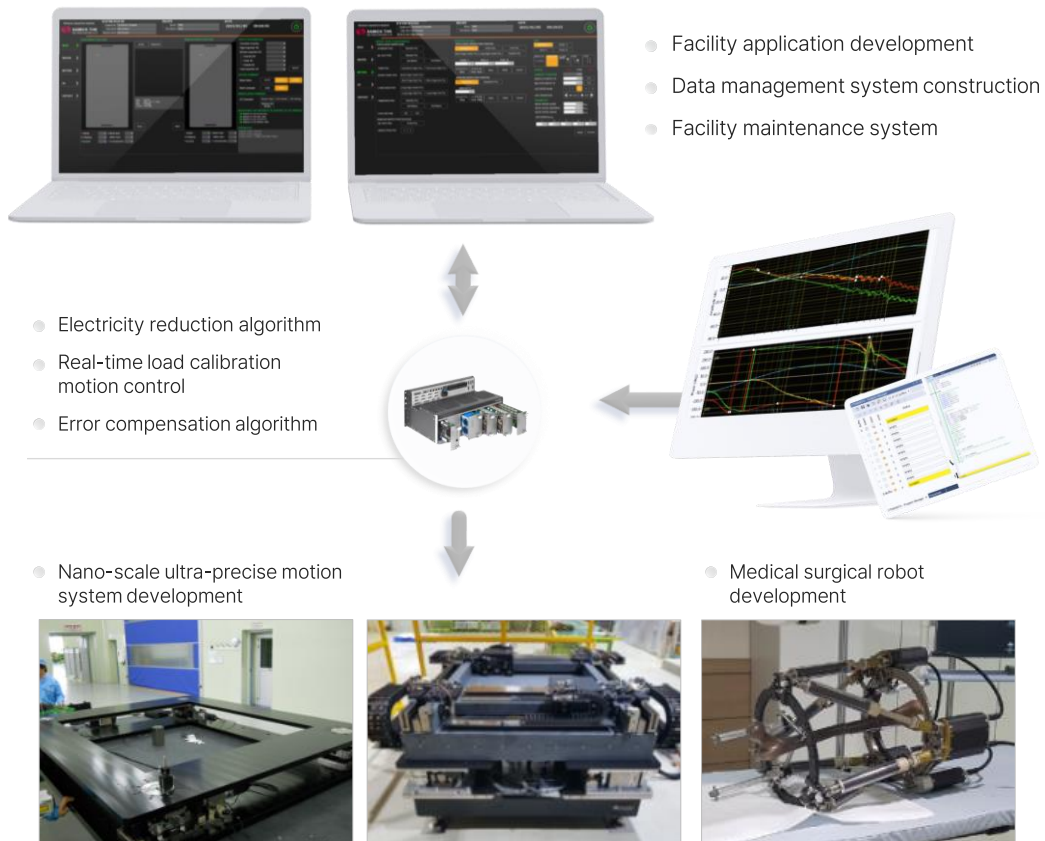


Detailed view (QR)

02 System

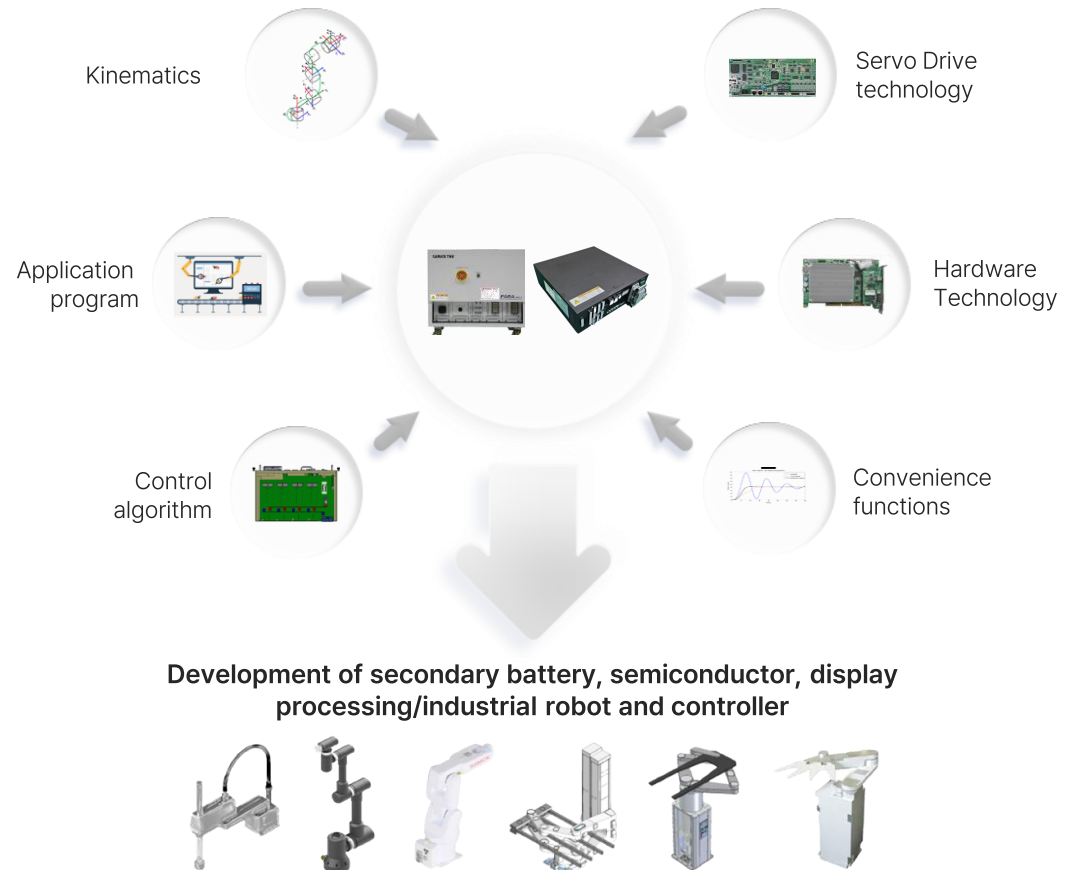
3 Ultra-precise motion system

..... From nano-scale ultra-precise motion to ultra-fast motion of 180m/min. or more, we provide the greater space value than customer's expectation.



4 Intelligent control system

..... We possess the original technology of hardware module and robot controller software system. We move our customer's valuable products more safely, more precisely, and more conveniently.



03 System Product

1 HP/CP equipment

It is a heat treatment equipment used during the display TFT manufacturing process that removes photosensitive liquid and moisture through precise high and low temperature control.

Advantages

Realize precise temperature control of $\pm 1.5\text{ }^{\circ}\text{C}$ at workable temperature between $20\text{ }^{\circ}\text{C}$ ~ $150\text{ }^{\circ}\text{C}$



Minimize the fume inside the chamber



Optimal control system considering customer convenience

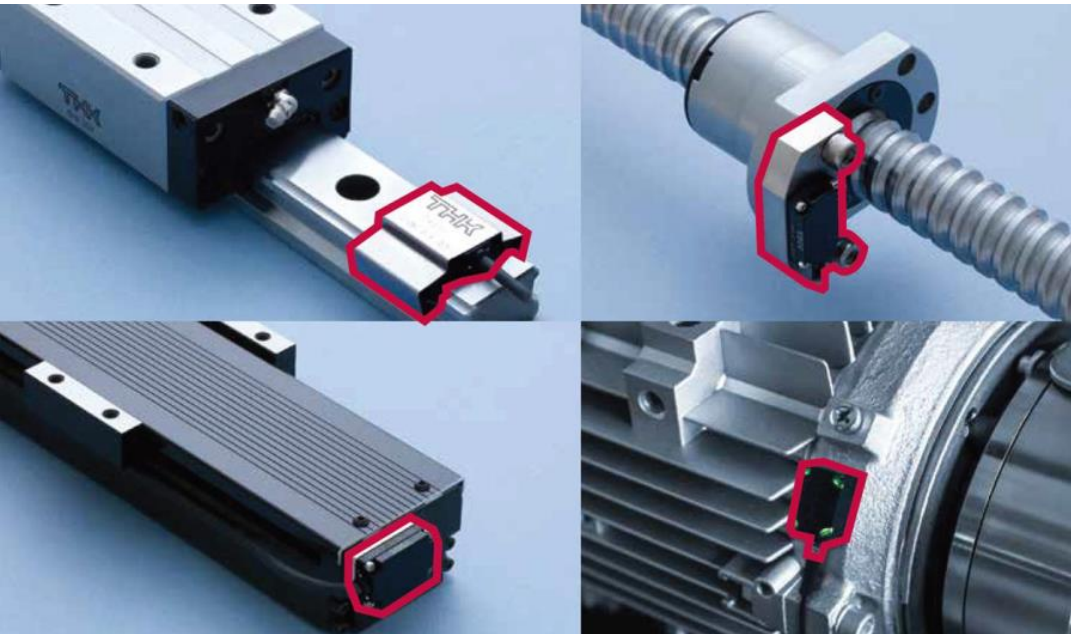


04 Smart things

1 Predictive maintenance system (OMNledge)

Equipment status can be digitized by attaching a sensor to the linear motion system (LM guide, ball screw, and rotary bearing). IoT technology is easily introduced, and this can be applied to existing equipment.

Production facility shutdown due to sudden breakdown can be prevented, and the productivity can be enhanced under predicted maintenance.



Advantages



Simple installation

Network is automatically established simply by installing an exclusive sensor to THK components and supplying power



Safe operation

Safe collection using the closed network



Pre-prediction

The predictive software analyzes data, and the software learns and evolves based on collected data.



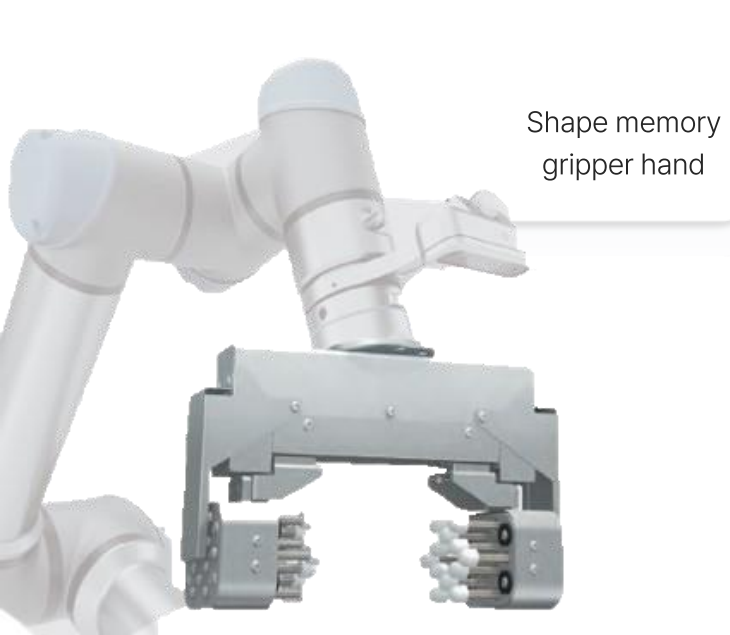
04 | Smart Things

2 QUICK CLAMPER responding to various workpieces

We provide the solution responding to various pieces using the quick clamper element parts. Flexible production site can be established by applying the quick clamper.

SAMICK THK quick clamper shape memory device series

Shape memory device can fix, support and return various types of workpieces by contacting a device to workpieces using a quick clamper. The standardized product allows various forms of workpiece to be gripped, picked and placed. Shape memory gripper TNH is applicable in various environments.



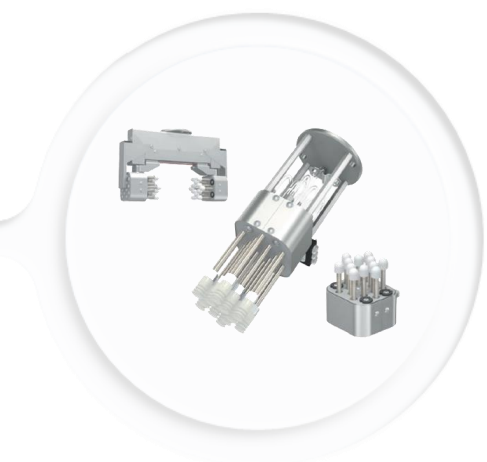
Shape memory gripper hand



Shape memory jig – Gripper type (Smart Jig)



Shape memory jig (Smart Jig)



Shape memory jig (Pick & Place)

04 Smart Things

3 PPR Pick & Place Robot

There is a rising demand for solutions that minimize damage to vulnerable and fragile objects such as condensers, lenses, and glass becoming miniaturized, in line with technology advancement. THK PPR can control contact of 0.15N, work impact of 0.3N, and resolution of 0.01N.



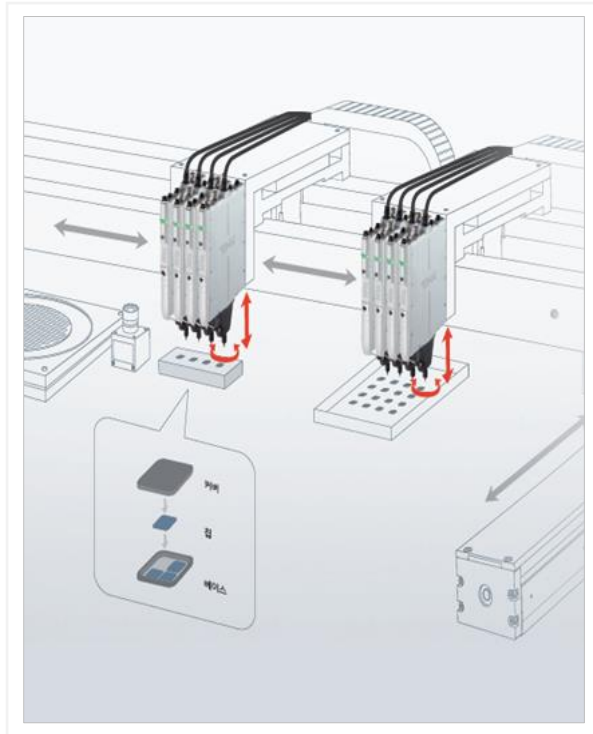
Reduces work damage



Shortens cycle time



Visualizes the pick and place process



Pick and Place Robot Schematic and actual mounting view

Pick and Place Robot

04 Smart Things

4 VTS

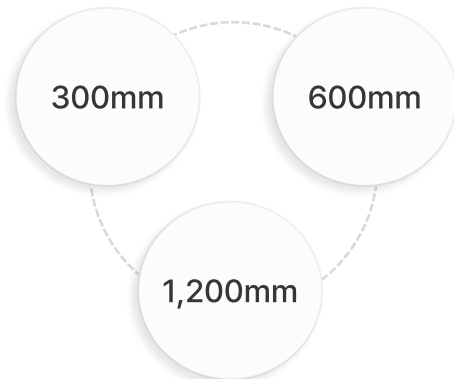
VTS, a work transport system using a linear motor can design as many processes as customers need by constituting it as a modular product. Direct work on work from the top of the table can be performed and respond to both horizontal and vertical circulation structures contingent on the work environment.

Long-life durability and long-term maintenance-free performance can be realized through the block by minimizing impact to the connection part developed for exclusive use.



Advantages

Responds to max. of 19.2m with one controller



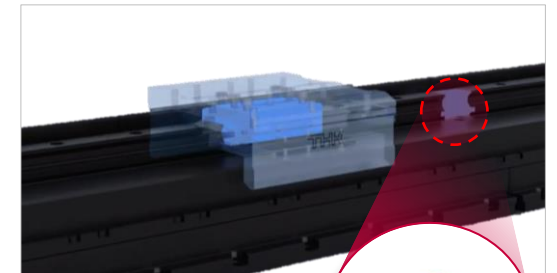
Capable of performing random work on multiple sliders



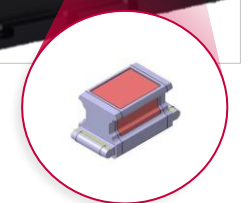
Capable of work of 3,000N directly on sliders with a work load of 30kg and transport speed of 3m/s.



Minimizes impact to the LM guide connecting part, allowing long-term maintenance-free durability



※Patent Application (Lubricating block)



MOTION

SAMICK THK creates the world's top-class value of **motion.**

Motion of SAMICK THK with precise technology of producing LM guides, ball screws and files & rasps, standing at the top for over 60 years. Our vivid history and pride continue to be the driving force behind SAMICK THK.

01 Actuator

1 Actuator

A product that has secured the convenience in designing equipment comprised of ball screws, the LM guide, and linear motor, which are transport components, with products directly produced by SAMICK THK.

- Major products
- SAS
- SAB
- SEM
- CDM
- TX
- SMX

Responds to automation equipment in all areas



Semiconductors



Secondary battery



Smart factory



Machine tool



Automobile



Display



World-class technology



Proven quality



Specialized service



No. 1 maker of actuator production components

- ✓ Independent production of LM guides, ball screws, cross roller rings and linear motor modules
- ✓ Over 90% of LM guides and ball screws are products directly produced by SAMICK THK, and THK products are applied as a top priority.
- * Other special order products are combined.

Quality assurance through definitive certification

- ✓ Improvement of quality through technologies that produce Korea's best LM guides and ball screws
- ✓ Prowess and know-how regarding THK's internal certification and production components accumulated for many years

High level of after-service support for overall actuators

- ✓ Capable of accurate identification of problems inside actuators such as assembly and reasonable after-service
- ✓ Manpower dedicated to after-service is deployed to the actuator support department to provide a quick response through nationwide sales network

1 Representative strength of the Actuator

- It is a highly cost-effective drive unit product comprised of standardized units utilizing ball screws, an LM guide, and linear motor.
- We guarantee top quality by applying proprietary ball screws and LM guides produced by our company.

Type

Ball screw-driven type

A method of driving by generating thrust derived from ball screws. It is suitable for usage conditions requiring high repeatability and top-notch positioning accuracy.

Belt-driven type

A method of driving by generating thrust derived from a belt. It is suitable for usage conditions requiring long stroke and high-speed drive.

Linear motor-driven type

A method of driving by generating thrust derived from a linear motor. It is suitable for usage conditions requiring precise controls.

Representative Products



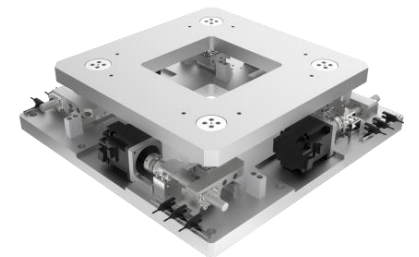
SAS
 Ball screw-driven basic model



SAB
 Belt-driven basic model



CDM/SDM
 Linear motor unit that can easily perform precise transfer & control

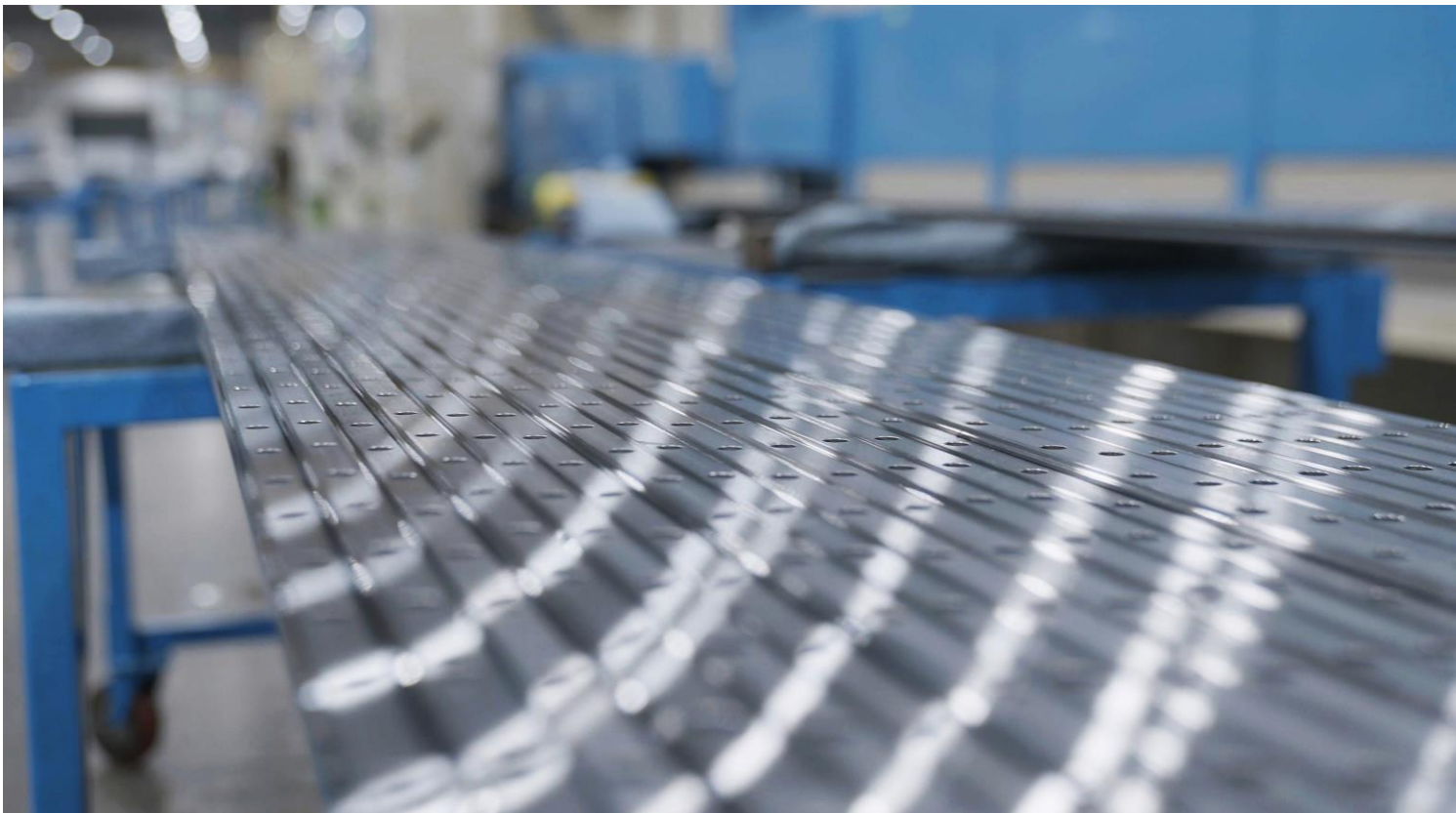


SMX
 Alignment stage

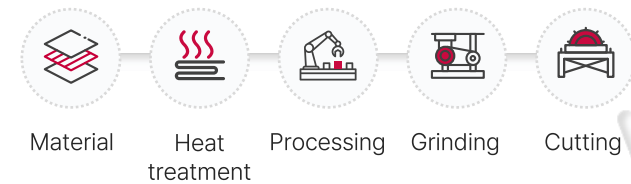
2 | LM Guide

LM Guide is a linear guiding device where the balls inside the block are in infinite circulation, realizing higher accuracy, higher stiffness, faster operation, and longer lifespan.

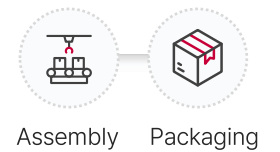
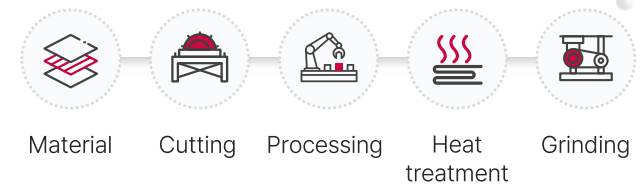
Main products | Ball retainer type **SHS SSR SRS** Full-ball type **HSR SR RSX**



Rail manufacture process



Block manufacture process



2 Main Advantages of LM Guide

SAMICK THK's representative LM guide product, the ball retainer type, shows unrivaled technology compared to competitors. We also hold the world's biggest production capability over LM guide production.

Ball retainer type advantages



High Speed

Fast transfer available via ball alignment motion



Maintenance-free

Constant oil film over the balls with grease pockets, realizing long-term maintenance-free



Low noise and good sound quality

No metal noise from ball-to-ball impacts, enabling silent mobility even at high speed



Excellent automatic adjustment

THK's circular-arc groove (DF) structure enables highly accurate and smooth operation



Low oscillation

No abrasion by ball-to-ball friction, with low oscillation by improved grease maintainability

Main products



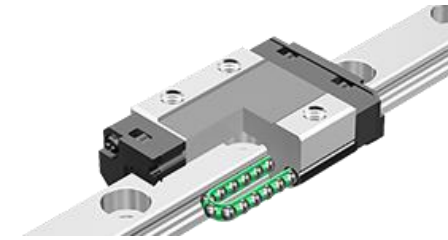
SHS

World standard, 4-way equal load type
Each ball line alignment is at 45° to set the identical rated loads on radial, reverse radial, and transverse directions.



SSR

Radial and compact types
Ball contact structure that is strong against the radial direction load is optimized for horizontal guide part.



SRS

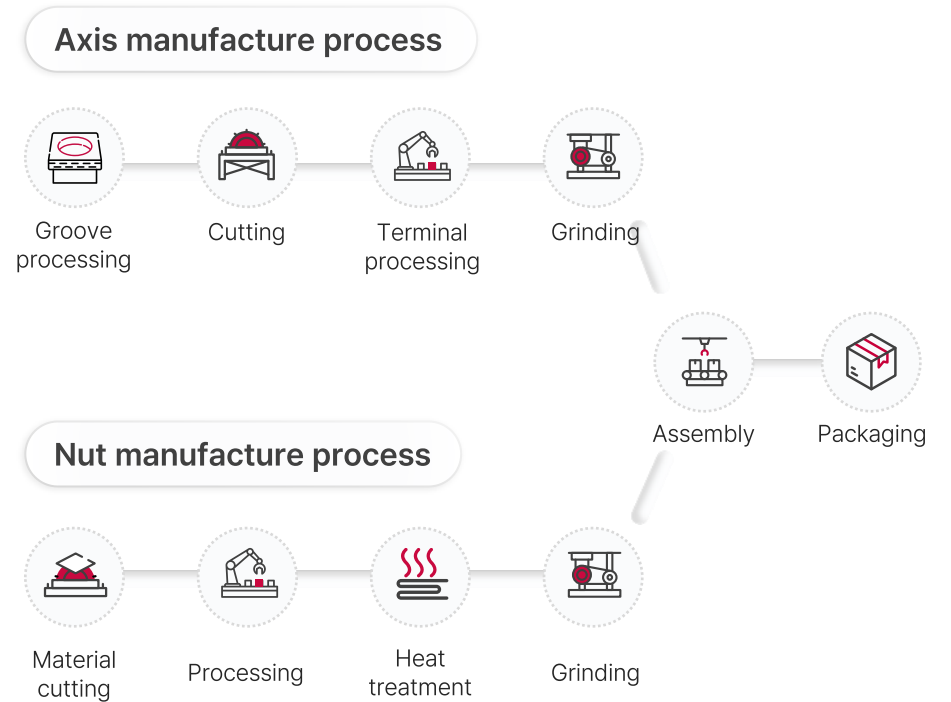
Miniature type
The part of the LM block is insert-formed to reduce weight in response to the resin material.

3 Ball Screw

The feed screw provides high efficiency since the balls are in the rolling motion between the screw axis and nut.

Ball screw is optimized in saving energy of the driving motor since the driving torque can be less than 1/3 compared to existing slide screws.

Main Products Precision grinding ball screw BNK-K BIF-V SDA-VZ MDK



3 Main Advantages of Ball Screw

- Precision grinding ball screw stands as the representative ball screw products in Korea.
- SAMICK THK developed the nation's first axis-end finished product "BNK-K" based on the unrivaled precision grinding technology, followed by various product groups.

Type

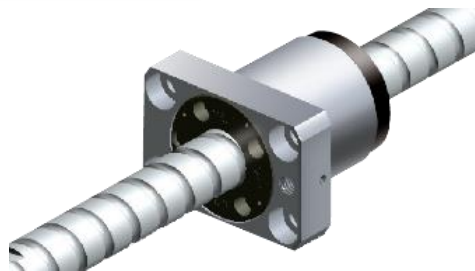
Axis-end finished product

It is a space-saving standardized ball screw unit. High-accuracy transport device can be easily manufactured under a compact design.

Axis-end raw product

It is a series that standardizes the precision ball screw axis mass-produced to a certain length. Additional processing of the screw axis ends becomes simpler.

Main products



BNK-K

Ultra-low noise type axis-end finished product ball screw



BIF-V

Axis-end raw product ball screw with enhanced existing DN values



SDA-VZ

Compact type high-speed ball screw



MDK

Miniature type axis-end raw product ball screw

04 | Files and Rasps

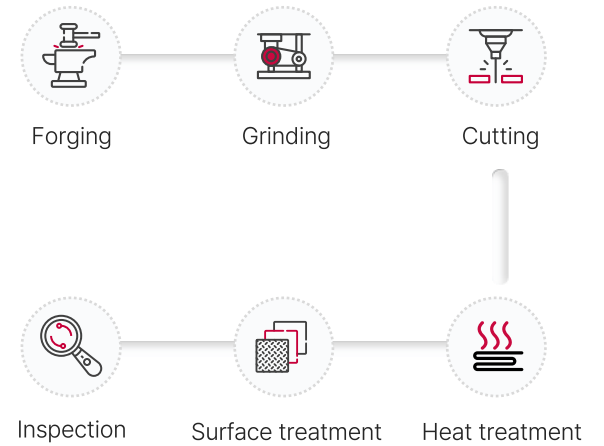
4 Files and Rasps

- The handmade tool is made by creating file grooves on the surface of tool steel materials with different shapes including plane, semicircle and triangle, followed by heat treatment, with the purpose of trimming the metal surface.

Main Products Ironwork files Needle files Saw files Horseshoe files



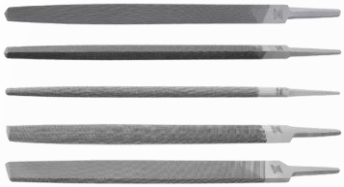
Manufacture process



4 Main Advantages of Files and Rasps

- SAMICK THK exported files and rasps to the U.S., the center of market worldwide, first in Korea.
Our products are renowned by the world with its excellent quality.

Main Products



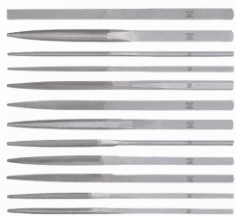
Ironwork files

For metal processing



Saw files

For repolishing the blunted saw blades



Needle files

When precision of work is required,
such as craftwork



Horseshoe files

For trimming the surface where
the horseshoe is attached



R&D

Product

Future Design of SAMICK



LM guide development support

- Ball circulation **structure improvement**
- Assembly **structure improvement**
- **Unit compatibility** among identical models



Ball screw development support

- **High speed R&D**
- **Low noise R&D**
- **Specialized ball screw** development improvement



LM system-related product development

- **Lubrication-related product** development
 - Solid lubrication seal
 - Grease for special environments
- **Maintenance-free technology** development
- Other option development

Design

Automation and Smart Innovation on Production Equipment and Process



Futuristic production equipment development

- Integrated development on precision measurement and production features
- High reproducibility securement on manufactured product measurements



Process automation and smart innovation development

- Robot-applied high-efficiency automated production process development
- Integrated control system development between production processes



Production system development

- Design simulation for improving production equipment's performance
- Process simulation for improving production efficiency

System and Processing Technology

FACTORY AUTOMATION Research



Unmanned production system development support

- Self-operation system development for the production system
- Production system linkage system development



High-efficiency, high-performance processing technology development

- High-efficiency & suitable quantity production technology development
- Flexible production system development based user demands

Certification

SAMICK THK is acknowledged for the product excellence every year since its foundation, and tries its best in quality improvement via thorough quality control.



Quality Management System LM guide factory | Quality Management System Ball screw factory | Quality Management System MC business HQ | CE Certification Linear Motor | World-Class Product Certificate | Specialized Business for Materials and Parts | KS Mark Certificate Files and Rasps | Excellence Company Certificate | Materials and Parts Reliability Certificate

2011. 11. 25 | 2010. 12. 28 | 2010. 03. 08 | 2008. 04. 11 | 2003. 05. 23 | 2002. 09 | 1996. 11. 15 | 1988. 12 | 1988. 12

Selected for excellent quality innovation (hosted by Samsung Electronics) | Seismic isolation table certified as New Excellent Technology (NET) (Ministry of Knowledge Economy) | Acquired Linear motor CE certification (TUV NORD in Germany) | Acquired reliability certification for materials and parts (Ministry of Knowledge Economy) | LM GUIDE selected as the next-generation world-class product | Selected as a man of honor for excellent capital goods development (Presidential citation) | Acquired quality management system (ISO 9001) certification (LM guide factory, ball screw factory, MC business HQ) | Excellent KS company grand prize (Industrial Advancement Administration) | Awarded by the KIPO Commissioner (selected as the top trademark in 1988)

NETWORK

The SAMICK THK that extends worldwide based on a solid domestic network

PYEONGTAEK WORKS

SUWON WORKS

TECHNOPOLIS WORKS

CENTER WORKS

DASAN WORKS

GLOBAL NETWORK



PYEONGTAEK WORKS

Device mecca leading the smart solution: Pyeongtaek Works

Pyeongtaek Works was completed in December 2018, and robot and system fields were comprehensively transferred in 2019.

We manufacture and sell various industrial products, including secondary battery process, test and display equipment, semiconductor robot, display process logistics robot, and Cartesian robot product. All employees in Pyeongtaek Works are doing their best to lead the smart solution as people of SAMICK and value creators with DNA of innovation.

Pyeongtaek Works Overview

- Total gross area: 25,188 m²
- Core product: Secondary battery process/test equipment, semiconductor/display manufacture process robot, cartesian robot, etc.



Pyeongtaek Works Competitiveness

- Enriched human resources leading the smart solution
- System equipment development, manufacturing and supply capacity
- 20-year semiconductor equipment/display process robot design and manufacture



Pyeongtaek Works Annual Production Capacity (unit/per year)

14,000
units



SUWON WORKS

Smart solution core space with continuing expansion: Suwon Works

Suwon Works pioneers the ecosystem expansion via collaboration with the world's top partners in various business fields. We press on introducing modules, line automation and smart factory through optimized solutions in different F/A industries. We try to move to the smart solution core, under the keyword of "People and Robot, System and Robot."

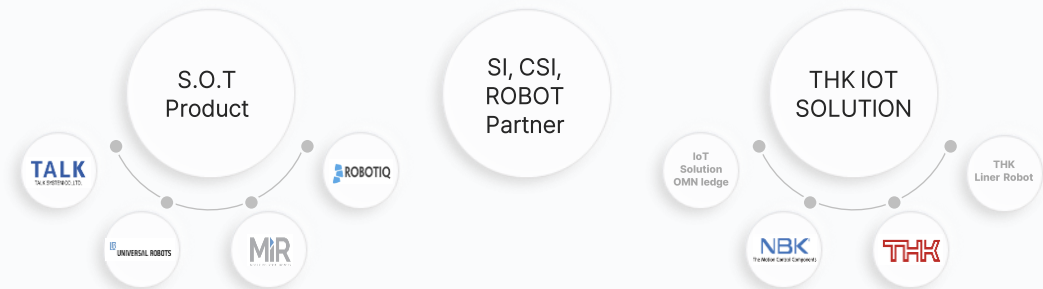
Suwon Works Overview

- Total gross area: 3,656 m²
- Core product: Cooperation robot, autonomous mobile robot, quick clamper, IoT predictive detection technology, PPR



Suwon Works Competitiveness

- SMART SOLUTION Sale's Share Platform





TECHNOPOLIS WORKS

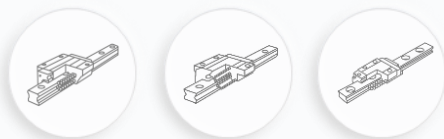
The world's largest single LM Guide production site: Technopolis Works

Technopolis Works produces precision LM guide products, our main product, and boasts the largest single production plant in the world.

We put our effort in producing the best quality products for customers, and devote ourselves in customer satisfaction via continuous technology development and quality management.

Technopolis Works **Overview**

- Total gross area: 39,678 m²
- Core product: LM guide SHS, SSR, SRS, HSR, SR, RSX



Technopolis Works **Competitiveness**

- Korea's top LM guide production technology
- Specialized maker of high-quality and high-accuracy production



Technopolis Works **Annual Production Capacity (pcs, m/per year)**

Block production
1,500,000
pcs

Rail production
570,000
m



HEADQUARTERS WORKS

Korea's top production technology, ball screw: Headquarters Works

Center Works produces ball screws, the main product of LM system at SAMICK THK, realizing the values of space and motion, possesses Korea's top ball screw production technology. Center Works aims to pursue product R&D to satisfy customer needs, as well as BNK-K type as a result of domestic R&D, and will launch towards the new era of automated industry.

Center Works **Overview**

- Total gross area: 26,671 m²
- Core product: Ball screw BNK, BIF, SDA



Center Works **Competitiveness**

- Korea's top ball screw production technology
- Precision grinding ball screw maker
- Multi-variety and small production available



Center Works **Annual Production Capacity (pcs/per year)**

240,000
pcs



DASAN WORKS

Worldwide-acknowledged perfect quality, files & rasps: Dasan Works

Files of SAMICK, which stood at the industrial sites for half a century, is the beginning of SAMICK THK and has been recognized so far.

Its quality was recognized by acquiring KS mark for the first time in Korea, and files are highly praised as the best files by world's leading file makers and craftsmen in the U.S., U.K. and Germany.

SAMICK THK releases complete products only after strict quality control involving metal constitution, structural and dimensional inspections to maintain the customer-first principle since foundation.

Dasan Works Overview

- Total gross area: 6,611 m²
- Core product: Ironwork file, needle file, saw file, horseshoe file



Dasan Works Competitiveness

- Best heat treatment
- Production with craftsmanship



Dasan Works Annual Production Capacity (file/per year)

1,000,000
Files

GLOBAL NETWORK

SAMICK THK begins its leap forward as the global smart factory solution company based on networks at home and abroad. We will complete establishing the overseas branches in the U.S., Poland and China in the 1st half of 2023, and plan to establish the corporation in Indonesia in the 2nd half of 2023. SAMICK THK creates a new history with a broader future to the bigger world beyond Korea, based on our 60-year history.



Overseas Branches



National Sales Network



Overseas branches



미국
MATZ AMERICA, LLC



폴란드
MATZ POLAND sp. z o.o.



중국
玛慈(南京)自动化装置有限公司
MATZ (Nanjing) Automated Device Limited

계열사



Samick Matz Ventures
Corporate venture capital (CVC)
465 Dongdaegu-ro, Dong-gu, Daegu city



SAMICK KIRIU Co., Ltd.
Automobile part (braking)
46, Dalseong2cha 1-ro Guji-myeon, Dalseong-gun, Daegu



SAMICK Precision Ind. Co., Ltd.
Linear Bushing
39, Seongseogongdannam-ro 32-gil, Dalseo-gu, Daegu



SAMICK HDS Co., Ltd.
Harmonic drive
66, Dalseong2chadong 2-ro Guji-myeon, Dalseong-gun, Daegu



SAMICK ADM Co., Ltd.
Planetary gear speed reducer
66, Dalseong2chadong 2-ro Guji-myeon, Dalseong-gun, Daegu



SAMICK SDT Co., Ltd.
Linear slide
329, Seongseogongdanbuk-ro, Dalseo-gu, Daegu

Heritage & New Era

The path of challenge and innovation of SAMICK THK towards the new era continues.

Upholding the 60-year pride of promising changes and successes, SAMICK THK is jumping up for a 100-year company.